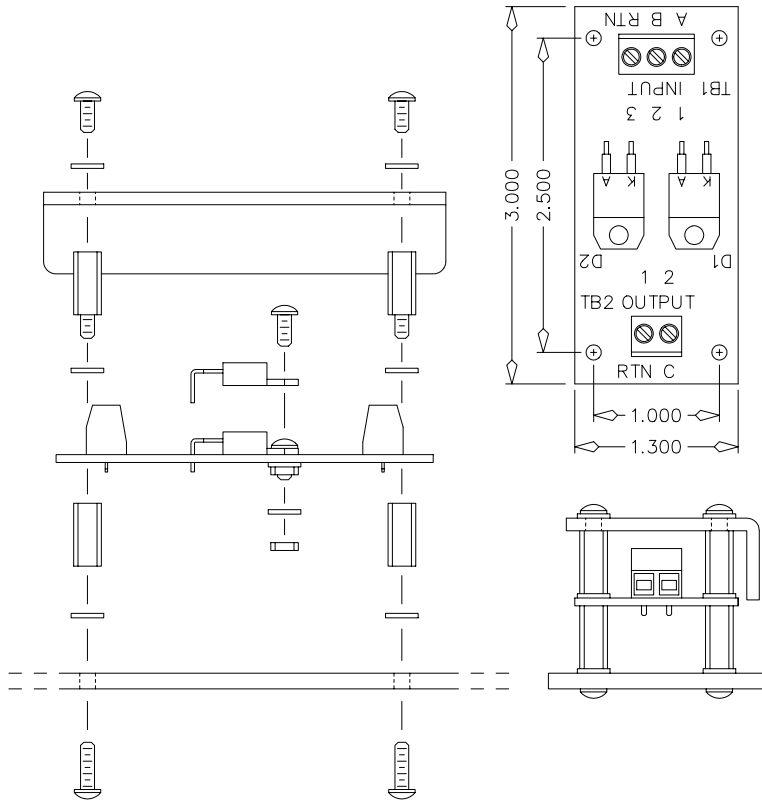
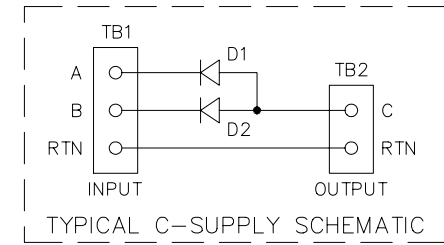
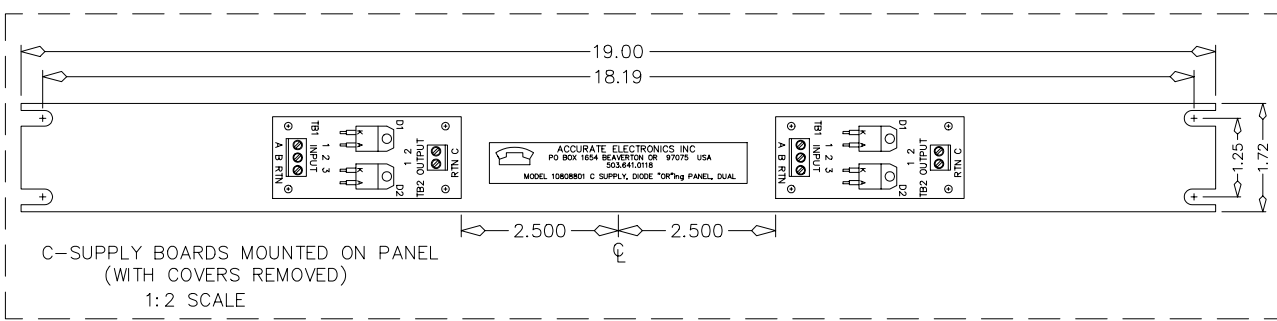



| REV | DATE | DESCRIPTION |
|-----|-----------|-------------|
| 0 | 20 May 09 | Release |



NOTES:

- 1.) SCALE: FULL (UNLESS NOTED)
- 2.) ALL DIMENSIONS IN INCHES
- 3.) TOLERANCE: +/- 0.025 (UNLESS NOTED)

| | | | |
|--|-----------------|----------------|------------------|
|  ACCURATE ELECTRONICS INC (503) 641-0118 P.O. BOX 1654 BEAVERTON OREGON 97075 USA | | | |
| DESIGN | MODEL 10808801 | | |
| DRAWN 19 Mar 09 | JWT | PARTS LIST | 0 |
| CHECK | ACAD FILE No. 0 | | |
| APPROVED | DASH No. | | |
| PROD. REL. | NEXT ASS'Y | | |
| ISSUE | FINAL ASS'Y | | |
| DATE | REV | SILKSCREEN No. | |
| DATE | REV | PART No. | |
| TITLE Ass'y Drawing, C-Supply, Diode "OR"ing Panel, Dual | | | |
| DATE | REV | PAGE 1 OF 1 | DRAWING NUMBER 0 |
| 20 May 09 | 0 | | |